



## AS4F



Semionda  
Half-Wave



56

Tipo contenitore: **B**  
Case type:

Connessione:  
Connection:  
**Cavetti/Cables**

Codice prodotto: **2550 F**  
Code:

V~ (50-60Hz): **0-600**



V---: **0-269**



Portata I max [A]: **1**  
Max capacity:

Protezione: **F3A**  
Protection:

Temp. **-20/+50°C**  
range:

Dimensioni: **28x38x18mm**  
Dimensions:



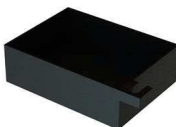
*Collegamenti elettrici previsti*  
*Possible electrical connections*  
Conn. #

**2** Collegamento STANDARD/STANDARD connection

## P2R



Picco rapido  
Fast



36

Tipo contenitore: **H**  
Case type:

Connessione:  
Connection:  
**Cavetti/Cables**

Codice prodotto: **5014**  
Code:

V~ (50-60Hz): **150-250**



V---: **66-110**



Portata I max [A]: **1**  
Max capacity:

Protezione: **F3A**  
Protection:

Temp. **°C**  
range:

Dimensioni: **74x48x20mm**  
Dimensions:



37

Tipo contenitore: **L**  
Case type:

Connessione:  
Connection:  
**Morsetti/Terminal blocks**

Codice prodotto: **5216**  
Code:

V~ (50-60Hz): **150-250**



V---: **66-110**



Portata I max [A]: **1**  
Max capacity:

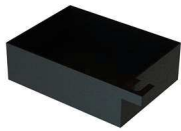
Protezione: **F3A**  
Protection:

Temp. **°C**  
range:

Dimensioni: **70x48,5x31mm**  
Dimensions:

*Collegamenti elettrici previsti*  
*Possible electrical connections*  
Conn. #

**2** Collegamento STANDARD/STANDARD connection



Tipo contenitore: **H**  
Case type:  
Connessione:  
Connection:  
**Cavetti/Cables**

V~ (50-60Hz): **250-440**



V===: **110-195**



Portata I max [A]: **1**  
Max capacity:  
Protezione: **F3A**  
Protection:  
Temp. range: **°C**

Codice prodotto: **5015**  
Code:

Dimensioni: **74x48x20mm**  
Dimensions:

38



Tipo contenitore: **L**  
Case type:  
Connessione:  
Connection:  
**Morsetti/Terminal blocks**

V~ (50-60Hz): **250-440**



V===: **110-195**



Portata I max [A]: **1**  
Max capacity:  
Protezione: **F3A**  
Protection:  
Temp. range: **°C**

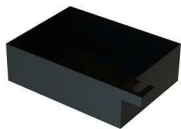
Codice prodotto: **5017**  
Code:

Dimensioni: **70x48,5x31mm**  
Dimensions:

39

**Collegamenti elettrici previsti**  
*Possible electrical connections*  
**Conn. #**

- 2 Collegamento STANDARD/STANDARD connection



Tipo contenitore: **H**  
Case type:  
Connessione:  
Connection:  
**Cavetti/Cables**

V~ (50-60Hz): **0-250**



V===: **0-110**

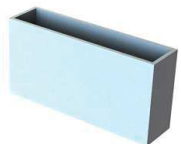


Portata I max [A]: **1,5**  
Max capacity:  
Protezione: **F5A**  
Protection:  
Temp. range: **°C**

Codice prodotto: **5000**  
Code:

Dimensioni: **74x48x20mm**  
Dimensions:

9



Tipo contenitore: **I**  
Case type:  
Connessione:  
Connection:  
**Cavetti/Cables**

V~ (50-60Hz): **0-250**



V===: **0-110**



Portata I max [A]: **1,5**  
Max capacity:  
Protezione: **F5A**  
Protection:  
Temp. range: **°C**

Codice prodotto: **5100**  
Code:

Dimensioni: **62x31x12,5mm**  
Dimensions:

8



Tipo contenitore: **L**  
Case type:  
Connessione:  
Connection:  
**Morsetti/Terminal blocks**

V~ (50-60Hz): **0-250**



V===: **0-110**



Portata I max [A]: **1,5**  
Max capacity:  
Protezione: **F5A**  
Protection:  
Temp. range: **°C**

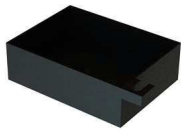
Codice prodotto: **5200**  
Code:

Dimensioni: **70x48,5x31mm**  
Dimensions:

10

**Collegamenti elettrici previsti**  
*Possible electrical connections*  
**Conn. #**

- 2 Collegamento STANDARD/STANDARD connection
- 3 Collegamento SUPER-RAPIDO/SUPER-FAST connection
- 4 Collegamento SILENZIATO/SILENCED connection



29

Tipo contenitore: **H**  
Case type:  
Connessione:  
Connection:  
**Cavetti/Cables**

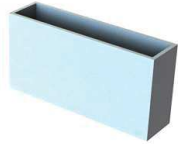
V~ (50-60Hz): **190-250**  
**IN**

V===: **83-110**  
**OUT**

Portata I max [A]: **1**  
Max capacity:  
Protezione: **F3A**  
Protection:  
Temp. range: **°C**

Codice prodotto: **5008**  
Code:

Dimensioni: **74x48x20mm**  
Dimensions:



30

Tipo contenitore: **I**  
Case type:  
Connessione:  
Connection:  
**Cavetti/Cables**

V~ (50-60Hz): **190-250**  
**IN**

V===: **83-110**  
**OUT**

Portata I max [A]: **1**  
Max capacity:  
Protezione: **F3A**  
Protection:  
Temp. range: **°C**

Codice prodotto: **5105**  
Code:

Dimensioni: **62x31x12,5mm**  
Dimensions:



31

Tipo contenitore: **L**  
Case type:  
Connessione:  
Connection:  
**Morsetti/Terminal blocks**

V~ (50-60Hz): **190-250**  
**IN**

V===: **83-110**  
**OUT**

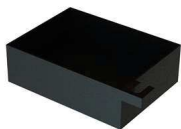
Portata I max [A]: **1**  
Max capacity:  
Protezione: **F3A**  
Protection:  
Temp. range: **°C**

Codice prodotto: **5209**  
Code:

Dimensioni: **70x48,5x31mm**  
Dimensions:

**Collegamenti elettrici previsti**  
*Possible electrical connections*  
Conn. #

- 2 Collegamento STANDARD/STANDARD connection



11

Tipo contenitore: **H**  
Case type:  
Connessione:  
Connection:  
**Cavetti/Cables**

V~ (50-60Hz): **0-500**  
**IN**

V===: **0-223**  
**OUT**

Portata I max [A]: **1,5**  
Max capacity:  
Protezione: **F5A**  
Protection:  
Temp. range: **°C**

Codice prodotto: **5001**  
Code:

Dimensioni: **74x48x20mm**  
Dimensions:



12

Tipo contenitore: **L**  
Case type:  
Connessione:  
Connection:  
**Morsetti/Terminal blocks**

V~ (50-60Hz): **0-500**  
**IN**

V===: **0-223**  
**OUT**

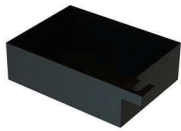
Portata I max [A]: **1,5**  
Max capacity:  
Protezione: **F5A**  
Protection:  
Temp. range: **°C**

Codice prodotto: **5201**  
Code:

Dimensioni: **70x48,5x31mm**  
Dimensions:

**Collegamenti elettrici previsti**  
*Possible electrical connections*  
Conn. #

- 2 Collegamento STANDARD/STANDARD connection
- 3 Collegamento SUPER-RAPIDO/SUPER-FAST connection
- 4 Collegamento SILENZIATO/SILENCED connection



Tipo contenitore: **H**  
Case type:

V~ (50-60Hz): **250-440**

V===: **110-195**

Portata I max [A]: **1**  
Max capacity:

Connessione:  
Connection:  
**Cavetti/Cables**



Protezione: **F3A**  
Protection:

Temp. range: **°C**

Codice prodotto: **5009**  
Code:

Dimensioni: **74x48x20mm**  
Dimensions:

32



Tipo contenitore: **L**  
Case type:

V~ (50-60Hz): **250-440**

V===: **110-195**

Portata I max [A]: **1**  
Max capacity:

Connessione:  
Connection:  
**Morsetti/Terminal blocks**



Protezione: **F3A**  
Protection:

Temp. range: **°C**

Codice prodotto: **5210**  
Code:

Dimensioni: **70x48,5x31mm**  
Dimensions:

33

**Collegamenti elettrici previsti**  
*Possible electrical connections*  
**Conn. #**

- 2 Collegamento STANDARD/STANDARD connection



Tipo contenitore: **AP**  
Case type:

V~ (50-60Hz): **100-500**

V===: **44-224**

Portata I max [A]: **1**  
Max capacity:

Connessione:  
Connection:  
**Morsetti/Terminal blocks**



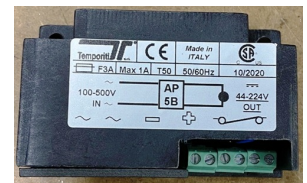
Protezione: **F3A**  
Protection:

Temp. range: **-20/+50°C**

Codice prodotto: **3-RADAP5BM-1050**  
Code:

Dimensioni: **68x23x41,5mm**  
Dimensions:

55



**Collegamenti elettrici previsti**  
*Possible electrical connections*  
**Conn. #**

- 2 Collegamento STANDARD/STANDARD connection