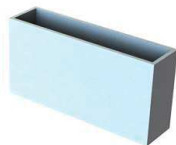


MARCHIO "CSA"

File nr. 264870



AP2R


Picco rapido
Fast

Tipo contenitore:
 Case type:

Connessione:
 Connection:
Cavetti/Cables
Codice prodotto: 2555-B
 Code:

 $V \sim (50-60\text{Hz}): 150-280$

 $V_{\text{---}}: 66-124$

Dimensioni: 62x31x12,5mm
 Dimensions:

Portata I max [A]: 1
 Max capacity:

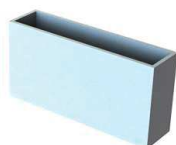
Protezione: F3A
 Protection:

Temp. range: °C


50

Collegamenti elettrici previsti
Possible electrical connections
Conn. #
2 Collegamento STANDARD/STANDARD connection

AP4R


Picco rapido
Fast

Tipo contenitore:
 Case type:

Connessione:
 Connection:
Cavetti/Cables
Codice prodotto: 2555-C
 Code:

 $V \sim (50-60\text{Hz}): 250-440$

 $V_{\text{---}}: 110-195$

Dimensioni: 62x31x12,5mm
 Dimensions:

Portata I max [A]: 1
 Max capacity:

Protezione: F3A
 Protection:

Temp. range: °C


51

Collegamenti elettrici previsti
Possible electrical connections
Conn. #
2 Collegamento STANDARD/STANDARD connection

AP5B

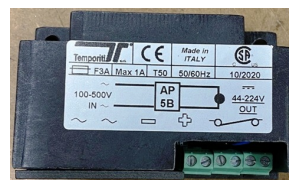

Semionda
Half-Wave
Tipo contenitore: AP
 Case type:

Connessione:
 Connection:
Morsetti/Terminal blocks
Codice prodotto: 3-RADAP5BM-1050
 Code:

 $V \sim (50-60\text{Hz}): 100-500$
IN
 $V_{\text{---}}: 44-224$
OUT
Dimensioni: 68x23x41,5mm
 Dimensions:

Portata I max [A]: 1
 Max capacity:

Protezione: F3A
 Protection:

Temp. range: -20/+50°C


55

Collegamenti elettrici previsti
Possible electrical connections
Conn. #
2 Collegamento STANDARD/STANDARD connection

AS2R



Semionda
Half-Wave



47

Tipo contenitore: **A**
Case type:

Connessione:
Connection:
Cavetti/Cables

Codice prodotto: **2560-B**
Code:

V~ (50-60Hz): **190-280**

IN

V_{DC}: **83-124**

OUT

Dimensioni: **41x31,5x14mm**
Dimensions:

Portata I max [A]: **1**
Max capacity:

Protezione: **F3A**
Protection:

Temp. range: **°C**



Collegamenti elettrici previsti
Possible electrical connections
Conn. #

- 2 Collegamento STANDARD/STANDARD connection

AS4



Semionda
Half-Wave



3

Tipo contenitore: **B**
Case type:

Connessione:
Connection:
Cavetti/Cables

Codice prodotto: **2550**
Code:

V~ (50-60Hz): **0-500**

IN

V_{DC}: **0-223**

OUT

Dimensioni: **28x38x18mm**
Dimensions:

Portata I max [A]: **1**
Max capacity:

Protezione: **F3A**
Protection:

Temp. range: **°C**



Collegamenti elettrici previsti
Possible electrical connections
Conn. #

- 2 Collegamento STANDARD/STANDARD connection
- 3 Collegamento SUPER-RAPIDO/SUPER-FAST connection
- 4 Collegamento SILENZIATO/SILENCED connection

AS4R



Semionda
Half-Wave



48

Tipo contenitore: **A**
Case type:

Connessione:
Connection:
Cavetti/Cables

Codice prodotto: **2560-C**
Code:

V~ (50-60Hz): **250-440**

IN

V_{DC}: **110-195**

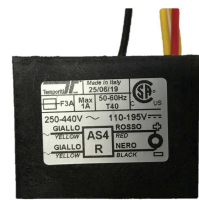
OUT

Dimensioni: **41x31,5x14mm**
Dimensions:

Portata I max [A]: **1**
Max capacity:

Protezione: **F3A**
Protection:

Temp. range: **°C**



Collegamenti elettrici previsti
Possible electrical connections
Conn. #

- 2 Collegamento STANDARD/STANDARD connection